

Benefits

- Consistent Product Quality at High Output Rates.
- Automatic Moisture Adjustment.
- Printed Load Reports & Material Usage Reports.
- Add-on Micro-Vision PC Application, for Plant Graphics, Material Stocks & Report Archive.
- Easy to operate.
- Comprehensive Support Services.

Automatic Control

The C-PAK Micro provides for automatic control of concrete and mortar/screed batching plant. It controls the weighing, discharge and optionally the plant mixing of concrete in accordance with stored mix recipes and specific production requirements. It caters for fixed or selectable volume batching. Fixed volume includes full batch, $\frac{3}{4}$, $\frac{1}{2}$ or $\frac{1}{4}$ options.

Adjustment settings are available to enable the system to be tuned for optimum plant performance.



Operation

Once a mix recipe has been selected the system instantly calculates the number of batches (if volume batching) and the material targets required.

The batching of each load is started either manually or automatically from a low level probe in a wet mix hopper i.e. unmanned.

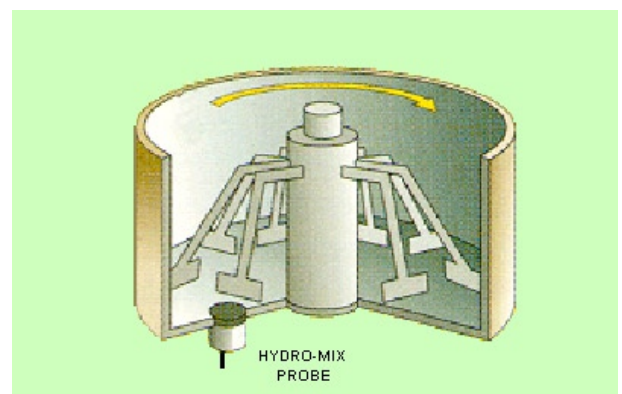
If unmanned, a batch counter can be set to determine the number of batches produced.



Automatic Moisture Adjustment

A microwave moisture probe fitted to the plant mixer can be connected for automatic mix moisture adjustment.

Also, aggregate bin probes can be connected for automatic aggregate target weight adjustment. If these are not connected aggregate target weights are adjusted from manually entered aggregate moisture figures.



20/5/2006 Mix: 26 SLAB MIX						
	20MM	SAND	OP	AEA	FIBRE	WATER
DRY TARGS	1170	770	126	4.60		260
BATCH 1 11.30 BIN & MIXER MOISTURE SELECTED						
MOIST	2.2	5.4				
TARGETS	1196	814	126	4.60	8	125
ACTUALS	1202	815	127	4.61	8	126
RUN TOTALS						
TARGETS	1196	814	126	4.60	8	125
ACTUALS	1202	815	127	4.61	8	126

Printouts

If a data printer is fitted to the system, combined batch and material usage reports can be automatically produced as batching progresses.

Also, period material usage reports, mix recipes and setup data can be printed out on demand.

Batching Screen

A live batching screen keeps the operator informed of batching progress and any plant alarm conditions that may occur.

The top line of the screen shows the current batching status: READY TO BATCH, WEIGHING, DISCHARGING, MIXING etc. If the system is waiting for a plant condition or operator action a WAIT status message is shown: WAIT AGGS CLOSED, WAIT AGGS OPEN, WAIT MIXER RUN etc.

BATCH	STOPPED	AUTO
MIX 1	VOL 3.0	BAT1-2
AGG 1	750	202KG
CEM 1	450	80KG
ADM 1	7.50	2.80KG
WAT	68	0LT
START	TARGETS	OTHER

Menu

A number of other screens are also available. These provide access to material bin allocations, aggregate moisture settings, mix recipes and material names, adjustments and engineering set-up data. They are available via the Menu screen.

MENU	12/06 13:44
1 BATCH	4 MAT'LS
2 BIN&MOIS	5 ADJUSTS
3 MIXES	6 ENGIN'R

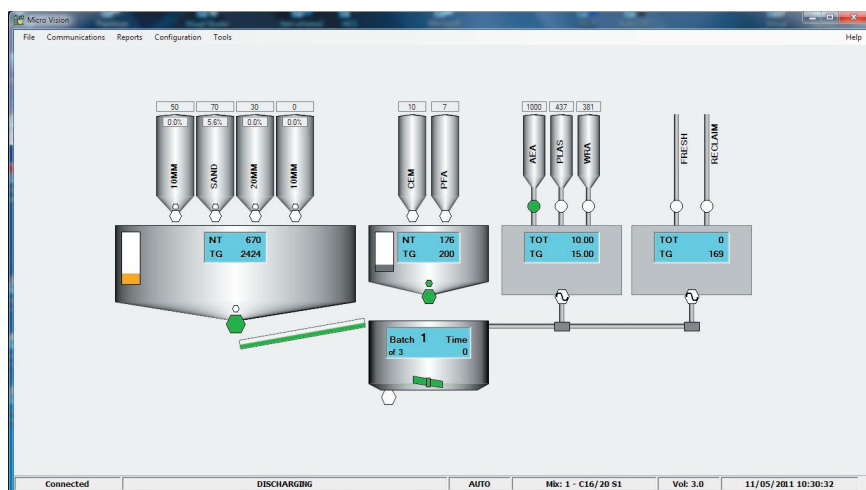
Manual & Standby Modes

A Manual mode can be selected on the front panel that allows for manually controlling any one feeder or discharge at a time and for production recording.

A Standby mode is available, via an external control panel switch input, that displays the total quantities for all dispensers: weighers or flowmeters. This allows for batching from external control panel switch circuits without production recording.

MicroVision: PC Application

This application provides additional operating and maintenance backup facilities.

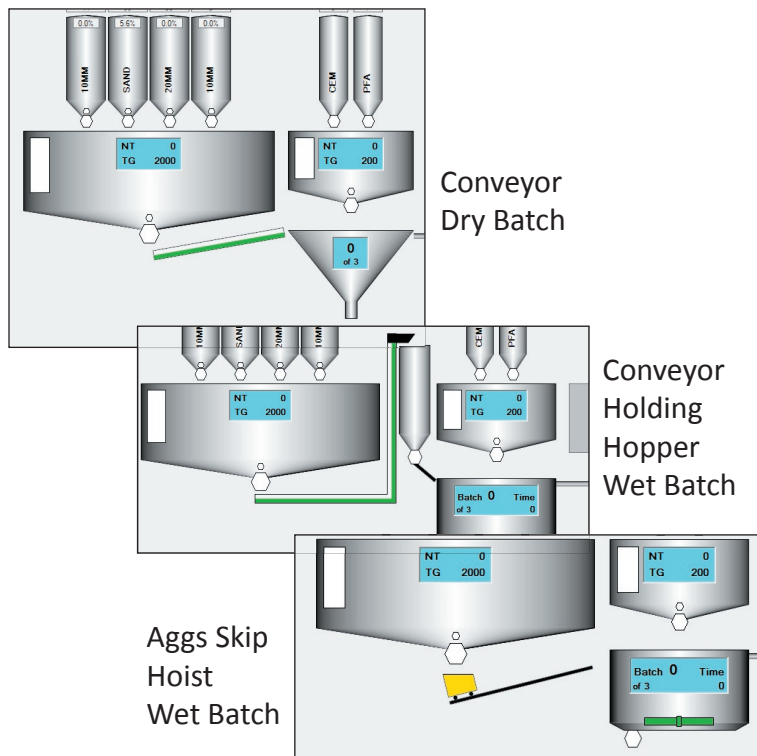


An animated plant graphic allows for monitoring the batching process. Material stock levels are updated as materials are used and as deliveries are manually entered. Load reports and material usage figures are archived during batching for subsequent viewing and printout. Optionally, load reports are printed out immediately they become available. System configuration settings and mix recipes can be retrieved and stored for system re-configuration in the event of the system being duplicated or the hardware replaced. On-line system monitoring is included. System support by remote PC access can be provided.

Application

The system is configured to suit particular applications i.e. particular plants and methods of operation, by entering various items of set-up data and by calibrating the weighers, flowmeters and moisture probes.

Also, batching data must be entered that comprises: material names, aggregate moisture setting, mix recipes (maximum 250) and bin allocations.



Plant Types

The standard C-PAK Micro controls the following plant configurations.

Aggregates	1 Hopper Weigher.
Aggs Lift	Conveyor, Conveyor with Holding Hopper or Hoist.
Cements	1 Hopper Weigher.
Additives	Either 1 Weigher or Flowmeter Dispenser.
Water	Either Hopper Weigher or Flowmeter.
Mixer	Plant Mixer or Dry Batch (no Plant Mixer)

Turnkey Projects

For plants to be automated they must be fitted with limit switches to sense that gates are closed, suitable load cells to produce weight signals and/or flow meters to produce flow pulses. Complete installations may also require MCC panels, electro-pneumatic valves and/or moisture measurement probes.

Practicon and its appointed overseas distributors can provide complete turnkey projects to meet these common requirements and any special requirements.

Maintenance Services

On-site maintenance services are provided by Practicon and its appointed overseas distributors.

Telephone/ modem support and parts replacement backup services are provided by Practicon from its UK base.



Supplied by:



Practicon Limited

Chapel Lane, Rode Heath, Stoke On Trent, ST7 3SD, UK
 Tel: +44 (0)1270 876211 Fax: +44(0)1270 878887
 Email: sales@practicon.co.uk Website: www.practicon.co.uk